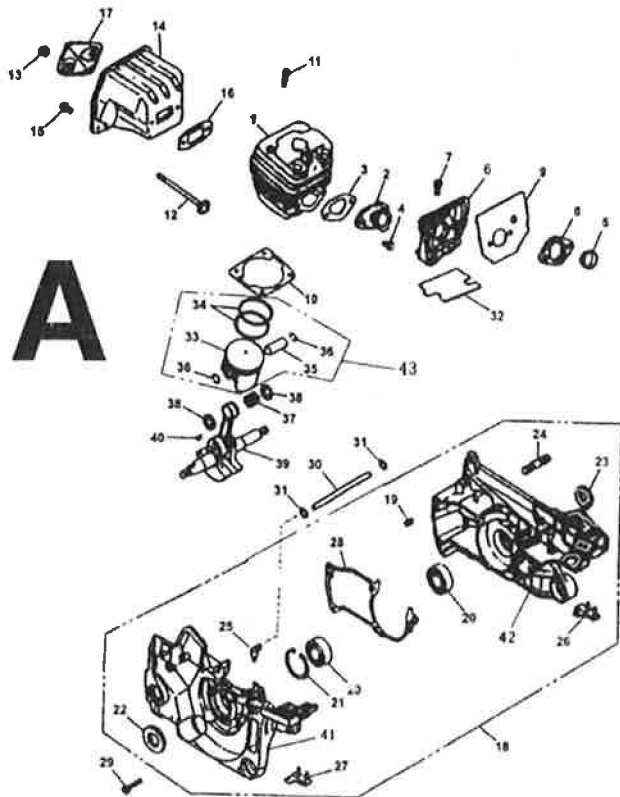
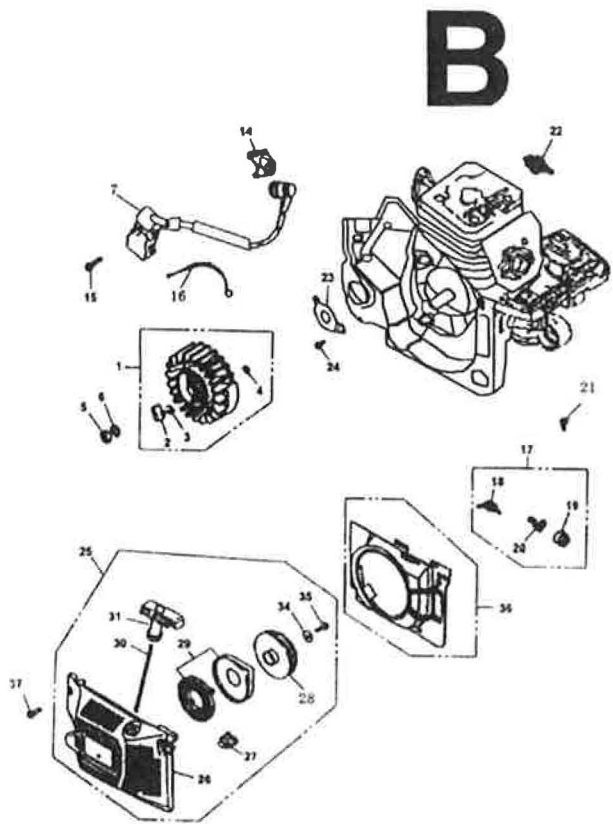


Fig.1 POWER UNIT



| KEY | DESCRIPTION | QTY | KEY | DESCRIPTION | QTY |
|-----|--------------------|-----|-----|------------------|-----|
| 1 | CYLINDER | 1 | 23 | OIL SEAL(R) | 1 |
| 2 | INLET PIPE | 1 | 24 | STUD | 2 |
| 3 | PIPE GASKET | 1 | 25 | ELBOW | 1 |
| 4 | SCREW | 2 | 26 | STOPPER(R) | 1 |
| 5 | INLET PIPE GUIDE | 1 | 27 | STOPPER(L) | 1 |
| 6 | CARBURETOR BRACKET | 1 | 28 | CRANKCASE GASKET | 1 |
| 7 | SCREW | 2 | 29 | SCREW | 5 |
| 8 | ASBESTOS MAT | 1 | 30 | VACUUM PIPE | 1 |
| 9 | SPACER | 1 | 31 | CLIP | 2 |
| 10 | CYLINDER GASKET | 1 | 32 | UNDER MAT | 1 |
| 11 | SCREW | 4 | 33 | PISTON | 1 |
| 12 | MUFFLER BOLT | 2 | 34 | PISTON RING | 2 |
| 13 | MUFFLER NUT | 2 | 35 | PISTON PIN | 1 |
| 14 | MUFFLER | 1 | 36 | CIRCLIP | 2 |
| 15 | SCREW | 2 | 37 | NEEDLE BEARING | 1 |
| 16 | GASKET | 1 | 38 | WASHER | 2 |
| 17 | SPACER | 1 | 39 | CRANKSHAFT COMP | 1 |
| 18 | CRANKCASE ASS'Y | 1 | 40 | KEY | 1 |
| 19 | SPRING PIN | 2 | 41 | LEFT CRANKCASE | 1 |
| 20 | BALL BEARING | 2 | 42 | RIGHT CRANKCASE | 1 |
| 21 | SNAP RING | 1 | 43 | PISTON ASS'Y | 1 |
| 22 | OIL SEAL(L) | 1 | | | |

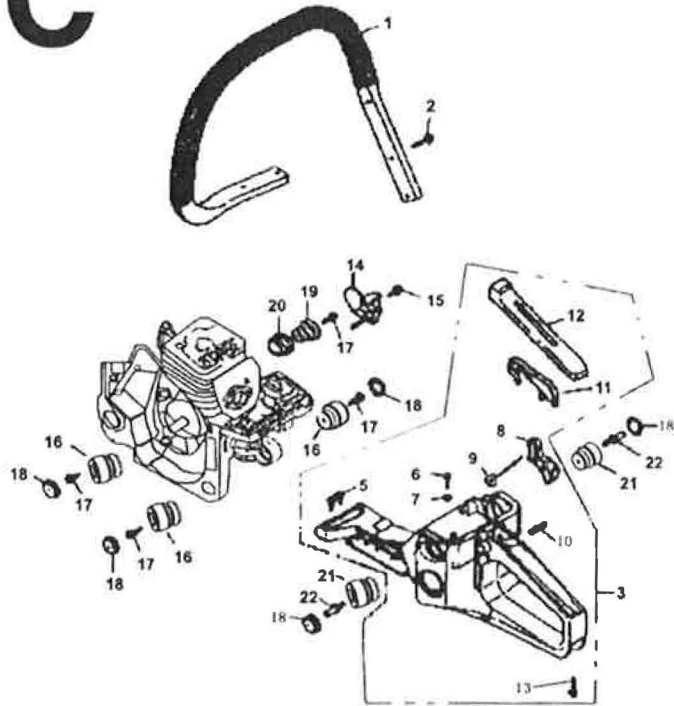
Fig.2 IGNITION, STARTING



| KEY | DESCRIPTION | QTY | KEY | DESCRIPTION | QTY |
|-----|----------------|-----|-----|--------------------|-----|
| 1 | FLYWHEEL ASS'Y | 1 | 22 | SPARK PLUG | 1 |
| 2 | PAWL | 2 | 23 | PLATE | 1 |
| 3 | SPRING | 2 | 24 | SCREW | 2 |
| 4 | RING | 2 | 25 | STARTER ASS'Y | 1 |
| 5 | NUT | 1 | 26 | STARTER COVER | 1 |
| 6 | WASHER | 1 | 27 | GUIDE(LH) | 1 |
| 7 | IGNITION ASS'Y | 1 | 28 | STARTER REEL | 1 |
| 14 | DUST SHIELD | 1 | 29 | RECOIL SPRING COMP | 1 |
| 15 | SCREW | 2 | 30 | NYLON ROPE | 1 |
| 16 | CORD | 1 | 31 | STARTER KNOB | 1 |
| 17 | SWITCH ASS'Y | 1 | 34 | REEL WASHER | 1 |
| 18 | SWITCH(ON/OFF) | 1 | 35 | SCREW | 1 |
| 19 | SWITCH COVER | 1 | 36 | FAN COVER | 1 |
| 20 | GROUND PLATE | 1 | 37 | SCREW | 4 |
| 21 | SCREW | 1 | | | |

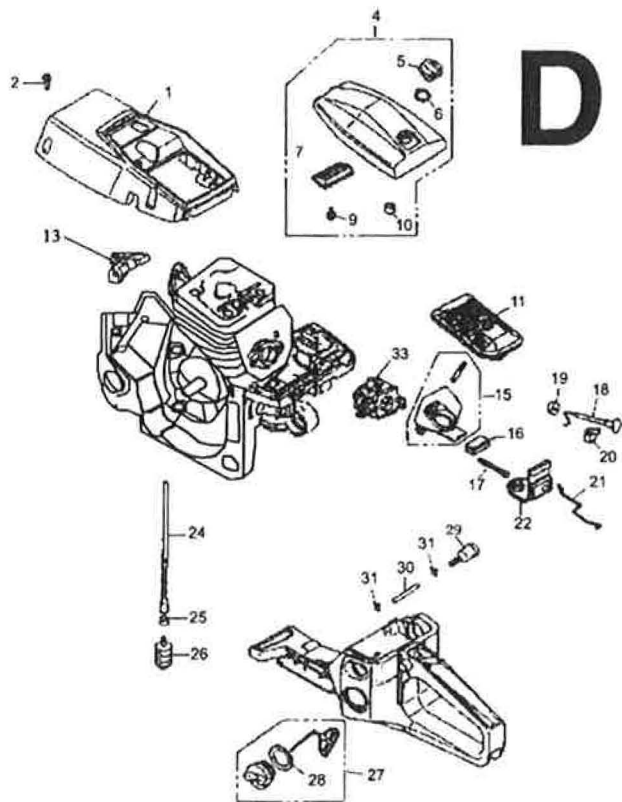
Fig.3 HANDLE

C



| KEY | DESCRIPTION | QTY |
|-----|------------------------|-----|
| 1 | FRONT HANDLE COMP | 1 |
| 2 | SCREW | 4 |
| 3 | REAR HANDLE ASS'Y | 1 |
| 5 | DAMPER | 1 |
| 6 | SCREW | 1 |
| 7 | GASKET | 1 |
| 8 | THROTTLE LEVER | 1 |
| 9 | THROTTLE SPRING | 1 |
| 10 | SPRING PIN | 1 |
| 11 | THROTTLE INTERLOCK ARM | 1 |
| 12 | REAR HANDLE COVER | 1 |
| 13 | SCREW | 1 |
| 14 | CHAIN CATCHER | 1 |
| 15 | SCREW | 1 |
| 16 | DAMPER | 3 |
| 17 | SCREW | 4 |
| 18 | CAP | 5 |
| 19 | SPRING | 1 |
| 20 | SPRING SET | 1 |
| 21 | DAMPER | 2 |
| 22 | SCREW | 2 |

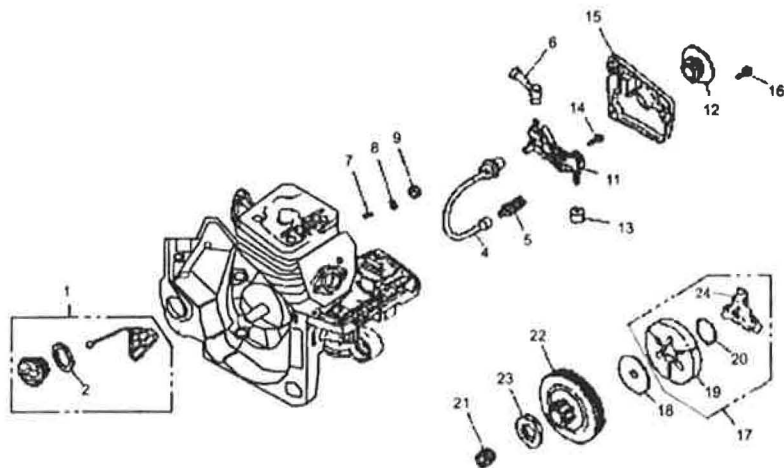
Fig.4 FUELING SYSTEMS



| KEY | DESCRIPTION | QTY | KEY | DESCRIPTION | QTY |
|-----|-----------------------|-----|-----|----------------------|-----|
| 1 | CYLINDER TOP COVER | 1 | 19 | CHOKE ROD GUIDE | 1 |
| 2 | SCREW | 5 | 20 | CHOKE ROD DAMPER | 1 |
| 4 | AIR FILTER COVER COMP | 1 | 21 | THROTTLE ROD | 1 |
| 5 | AIR FILTER COVER KNOB | 1 | 22 | DUST SHIELD | 1 |
| 6 | NYLON GASKET | 1 | 24 | FUEL PIPE | 1 |
| 7 | ANTI-FREEZE SCREEN | 1 | 25 | FUEL PIPE COLLAR | 1 |
| 9 | SCREW | 1 | 26 | FUEL FILTER ASS'Y | 1 |
| 10 | AIR FILTER DAMPER | 1 | 27 | FUEL TANK CAP ASS'Y | 1 |
| 11 | AIR FILTER COMP | 1 | 28 | FUEL TANK CAP WASHER | 1 |
| 13 | GUIDE (T) | 1 | 29 | BREATHER ASS'Y | 1 |
| 15 | MANIFOLD COMP | 1 | 30 | BREATHER PIPE | 1 |
| 16 | DAMPER | 1 | 31 | CIRCLIP | 2 |
| 17 | SCREW | 2 | 33 | CARBURETOR | 1 |
| 18 | CHOKE KNOB | 1 | | | |

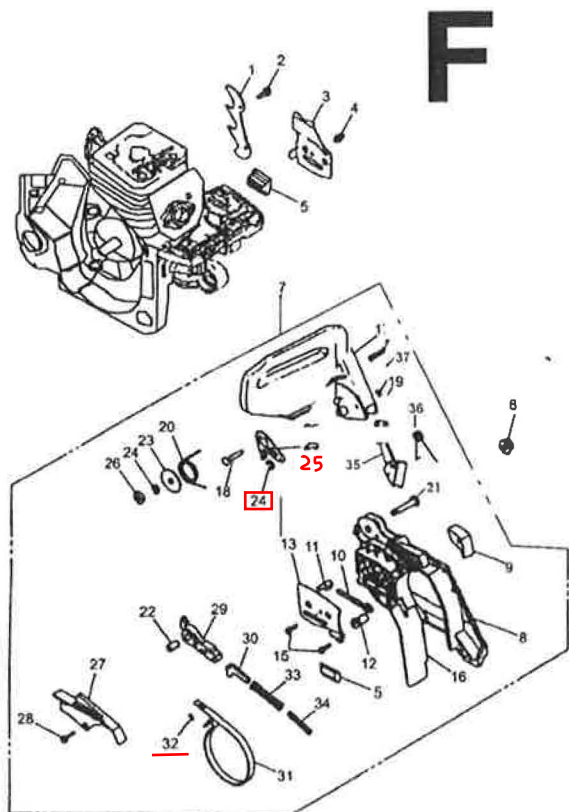
Fig.5 OIL SYSTEM, CLUTCH

E



| KEY | DESCRIPTION | QTY |
|-----|----------------------|-----|
| 1 | OIL TANK COVER ASS'Y | 1 |
| 2 | OIL TANK CAP GASKET | 1 |
| 4 | OIL PUMP PIPE(I) | 1 |
| 5 | FILTER ASS'Y | 1 |
| 6 | OIL PUMP PIPE(O) | 1 |
| 7 | BREATHER VALVE | 1 |
| 8 | SPONGE | 1 |
| 9 | RING | 1 |
| 11 | OIL PUMP ASS'Y | 1 |
| 12 | OIL PUMP WORM | 1 |
| 13 | SEALED SPONGE | 1 |
| 14 | SCREW | 2 |
| 15 | OIL PUMP COVER | 1 |
| 16 | SCREW | 3 |
| 17 | CLUTCH ASS'Y | 1 |
| 18 | CLUTCH WASHER | 1 |
| 19 | CLUTCH WEDGE | 3 |
| 20 | CLUTCH SPRING | 1 |
| 21 | NEEDLE BEARING | 1 |
| 22 | CLUTCH DRUM | 1 |
| 23 | SPROCKET | 1 |
| 24 | WEDGE BRACKET | 1 |

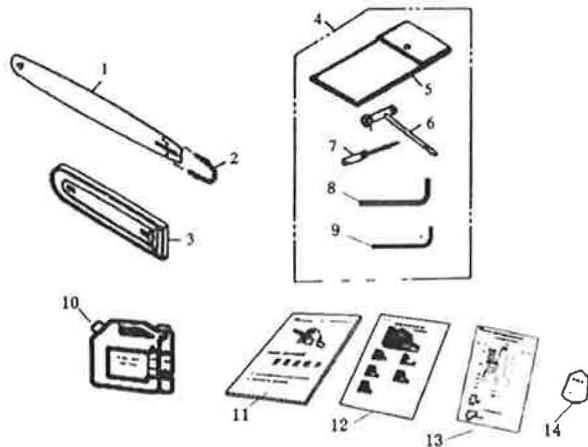
Fig.6 BREAKING SYSTEMS



| KEY | DESCRIPTION | QTY | KEY | DESCRIPTION | QTY |
|-----|--------------------|-----|-----|--------------------|-----|
| 1 | SPIKED BUMPER | 1 | 20 | RECOIL SPRING | 1 |
| 2 | SCREW | 2 | 21 | GUIDE PIN | 1 |
| 3 | OIL GUIDE PLATE | 1 | 22 | GUIDE PIN SLEEVE | 1 |
| 4 | SCREW | 1 | 23 | PLATE WASHER | 1 |
| 5 | CHAIN GUIDE | 2 | 24 | SNAP RING | 2 |
| 6 | NUT | 2 | 25 | STOPPER PLATE | 1 |
| 7 | CLUTCH COVER ASS'Y | 1 | 26 | RUBBER WASHER | 1 |
| 8 | CLUTCH COVER | 1 | 27 | BRAKE SPRING COVER | 1 |
| 9 | DAMPER | 1 | 28 | SCREW | 3 |
| 10 | TENSIONED BOLT | 1 | 29 | BRAKE LEVER COMP | 1 |
| 11 | TENSIONER PIN | 1 | 30 | BRAKE ARM | 1 |
| 12 | TENSIONER SCREW | 1 | 31 | BRAKE BAND | 1 |
| 13 | TENSION PLATE | 1 | 32 | ROLLER | 1 |
| 15 | SCREW | 2 | 33 | BRAKE SPRING(MAIN) | 1 |
| 16 | SAWDUST PROTECTOR | 1 | 34 | BRAKE SPRING(SUB) | 1 |
| 17 | FRONT HAND GUARD | 1 | 35 | HOOK | 1 |
| 18 | STOP PIN | 1 | 36 | TORSIONAL SPRING | 1 |
| 19 | SNAP RING | 1 | 37 | PIN | 1 |

Fig.7 GUIDE BAR. SAW CHAIN. TOOLS

G



| KEY | DESCRIPTION | QTY |
|-----|--------------------------|-----|
| G01 | GUIDE BAR | 1 |
| G02 | SAW CHAIN | 1 |
| G03 | GUIDE BAR COVER | 1 |
| G04 | ATTACHED TOOLS | 1 |
| G05 | TOOL BAG | 1 |
| G06 | WRENCH | 1 |
| G07 | SCREW DRIVER | 1 |
| G08 | S4 HEXAGON RING SPANNER | 1 |
| G09 | S3 HEXAGON RING SPANNER | 1 |
| G10 | FUEL MIXTURE KETTLE | 1 |
| G11 | OWNER' S MANUAL | 1 |
| G12 | CHAIN SAW STARTING GUIDE | 1 |
| G13 | PACKING LIST | 1 |
| G14 | ACCEPTANCE CERTIFICATE | 1 |