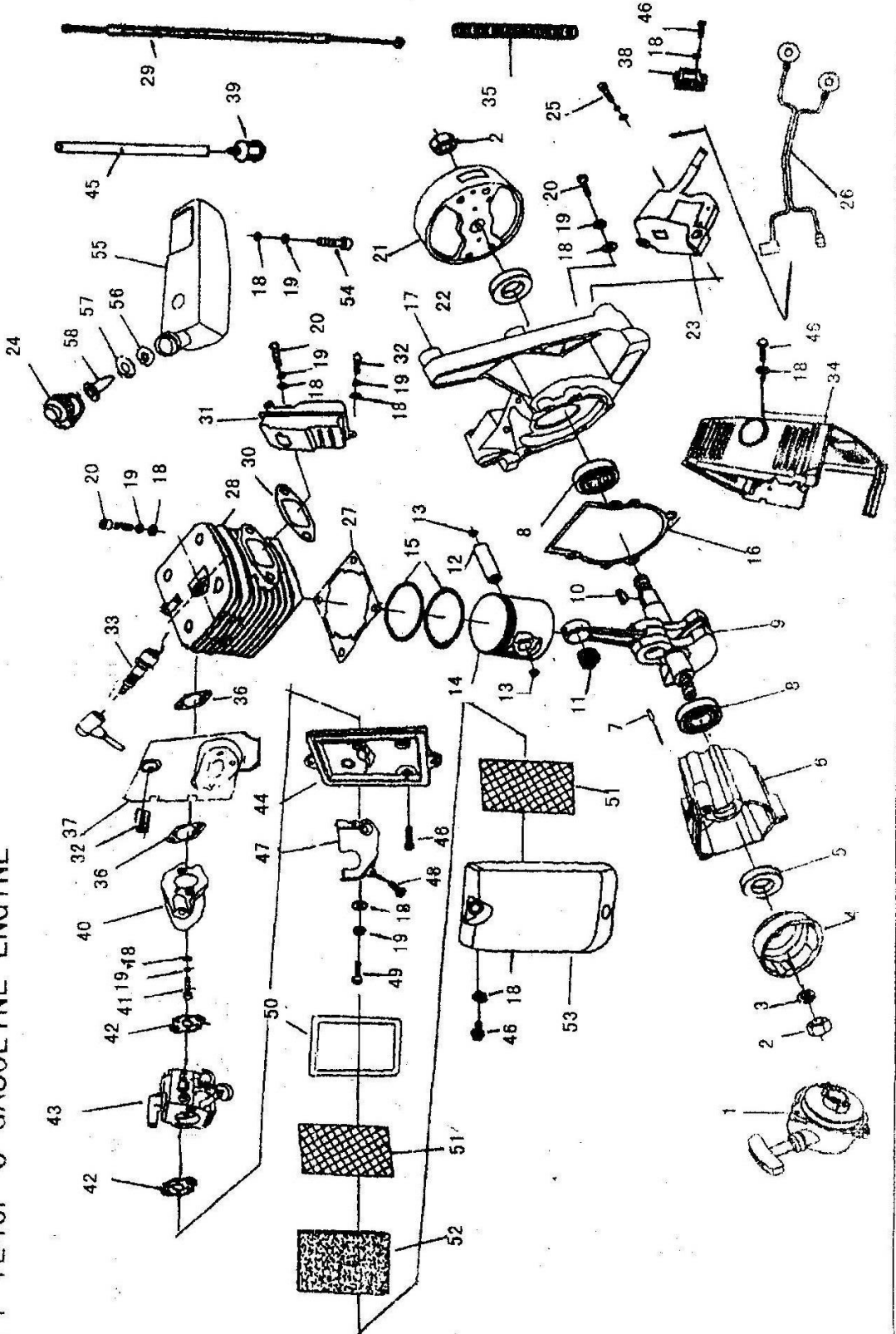


FIG. 1 1E46F-3 GASOLINE ENGINE



IE46F Pricelist

1-1	8866	STARTER
1-2	6083	NUT M8
	4253	WASHER8
1-4	2813	RATCHET
1-5	2881	OIL SEAL 15X22X5
	2811	REAR HALFCRANK CASE
1-7	4569	PIN B4X10
	1787	BALL BEARING
	2638	CRANK SHAFT COMP
1-10	4563	KEY
	0623	NEEDLE BEARING
1-12	0191	PISTON PIN 40X32
1-13	4550	PISTON PIN CIRCLET
1-14	2639	PISTON
1-15	2921	PISTON RING
	2903	CRANK CASE GASKET
<b>147</b>	2812	FRANT HALFCRANK CASE
1-18	5900	WASHER5
	4251	WASHER5
	1164	SCREW
	2810	MAGNETO STATOR
1-22	2882	OIL SEAL
	2809	MAGNETO STATOR
1-24	0221	FUEL TANK LID
1-25	1848	SCREW
1-25	2912	TVELTANK INNERLTD
1-27	2901	CYLINDER WASHER
1-28	2941	CYLINDER
1-29	2848	CABLE COMP
1-30	264b	MUFFLER GASKET
1-31	2885	MUFFLER COMP

1-32	1167	SCREW
1-33	0555	SPARK PLOG BPMR7A
1-34	8648	COVER
1-35	0010.	
	2902	CYLINDER WASHER
	2892	BOARQ
1-38	2927	LINE CLIP
1-39	0554	CLEANER
	2915	NLET MANIFOLD

1 200 - 125.-  
SOD. - 1500.-

150.-  
150.-  
50.-  
25.-

- 80.-  
- 1000.-  
- 250.-

125.-  
1500.-  
25.-  
25.-

125.-

250.-  
300.-

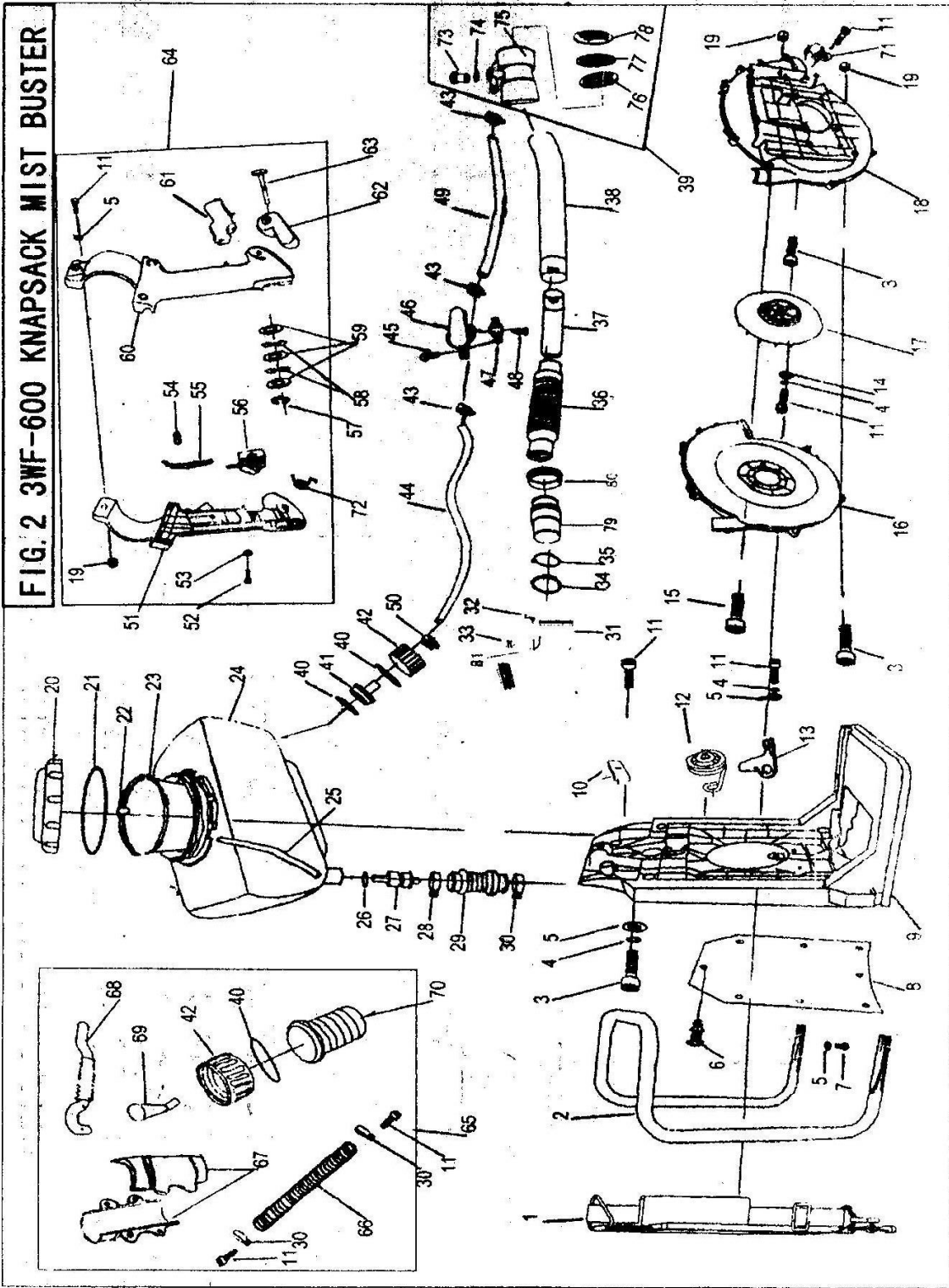
1-41	4373	SCREW
1-42	2898	CARR. GASKET
1-43	1991	CARBURETOR
	2922	LINKER
	2718	OUTLET FUEL PIPE
1-46	1173	SCREW M5*20
1-47	2982	BLOCK
1-48	2786	SCREW
1-49	4428	SCREW M5*50
1-50	2878	RUBBER SEAL
1-51	2793	CORE
	2860	BOARD (AIR FILTER)
	3028	COVER
1-54	1167	SCREW M5*16
	2829	FULE TANK
1-56	0243	RUBBER LID
1-57	7989	PLASTIC LID

1-58	0862	
------	------	--

- 85 -  
- 2000 -  
- 175 -

600.-

FIG. 2 3WF-600 KNAPSACK MIST BUSTER



F)GUREa-; Mistbtower Parts 3WF-600 (3WF-600 GASOLIN

No.	Er NO.	Part Name
1-1	2967	BELT ASSEM
1-2	2356	SUPPORT
1-3	7048	NST5*20
	7813	WASHER 5
1-5	6536	WASHER 5
1-6		PLASTIC CLIP
	6103	SCREWS T3.S*19
	2826	BACK MAT
	8673	FRAME
1-10	2899	PLATE
1-11	1173	SCREW M5*20
1-12	2918	ANTI-VfBRATE SPRING
1-13	2900	SPRING SUPPORT
1-14	4413	WASHER 5
1-15	7916	SCREW M5*50
1-16	8645	VOLOTE CASE
1-17	8643	IMPELLER
1-18	8644	VOLUTE CASE
1-19	4419	NUT MS
1-20	8642	LID
1-21	2831	SEALING WASHER
1-22	3005	PLVG
1-23	3030	CLEANER
1-24	0122	TANK
IQS	2915	PLASTIC PIPE
1-26	6248	SEALING WASHER

- 850.-  
- 380-  
185  
800-  
200.-  
150.-  
425.75  
- 450.-  
- 325.-  
- 345.-  
- 450.-

1-27	3026	AtWALVE
1-28	5001	CLIP22-38
1-29	2867	RVBBER PIPE
1-30	5001	CLIP22-38
1-31	8675	PAN JOINT
1-32	6451	STOPPER AXIS
1-33	6450	STOPPER
1-34	3019	CLIP 64-67
1-35	2916	CLIP&I
1-36	8674	HOSE
1-37	8015	PIPE
1-38	7657	LONG JOINT TVBE
1-39		NOZZLE ASSY
	2789	SWALING WASHER
1-41	3024	PULING
1-42	3025	CONNECTOR UD
1-43	2316	CLIP
		PLASTIC PIR
1-45	4364	SCREW M5*12

1-46	2893	COCK ASSEM
1,47	2926	SUPPORT
1-48	4314	SCREW M4*10
1-49		PLASTIC PIPE
1-50	0323	CLIP
1-51	7178	RZGHt CONTOROL CASE
1-52	4324	SCREW M3*16
1-53	5746	WASHER 3
1-54	3049	AX'S SLEEPE
1-55	2913	CONTACE
1-56	3050	SWITCH



1-57	6074	AXIS CLIP	50.-
1-58	6098	SADDLEWASHER 6	
1-59	3015	WASHER 6	20.-
1-60	7179	LEFT CONTOROL CASE	
1-61	0954	HANDLE	
1-62	0995	HANDLE—	
1-63	2974	HADDLE AXIS	50.-
1-64	3052	LEVER ASS'Y	
1-65		DUST PARTS	
1-66		RVBBER PIPE	-150.-
1-67	3034	PIPE	975.-
1-68	3035	ACROSS PIPE	
1-69	3036	UPRIGHT PZPE	
1-70	3033	CONNECTOR	250.-
1-71	0712	CLIP	50.-
1-72	2917	RETURN SPRING	
1-73	0415	REGULATOR VALVE	
1-74	4142	O-RING	85.-
1-75	0944	NOZZLE	85.-
1-76	1015	COVER BOARD )	185.-
1-77	0991>	COVER BOARD C.)	
1-78	0950	COVER BOARD (Y.)	
1-79	6462	CONNECTOR PIPE	
1-80	0540	RUBBER PLUG	
1-81	7808	PINI*8	